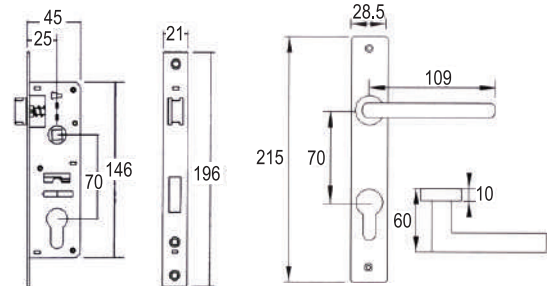


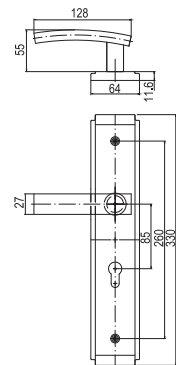
**Mortise Lever Handle Set & Lever Handle With Plate**

**ALM-NS7025-02/MB**



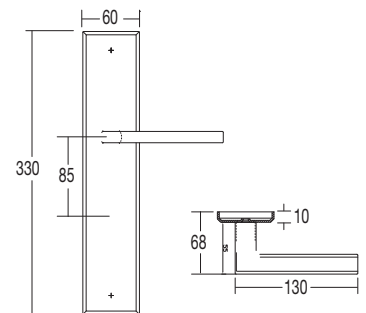
Code	Material	Finishing	Packing
ALM-NS7025-02/MB	Zinc Die-cast	Matt Black	12set/ctn

**ALH-B3365-2/CS/MB**



Code	Material	Finishing	Packing
ALH-B3365/CS/MB	Stainless Steel SUS304	Matt Black	10pair/ctn

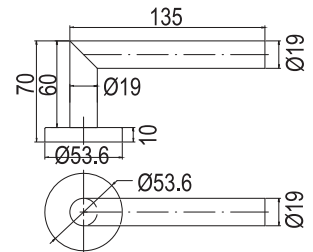
**ALH-98504C-330MB**



Code	Material	Finishing	Packing
ALH-98504C-330MB	Stainless Steel SUS304	Matt Black	6pair/ctn

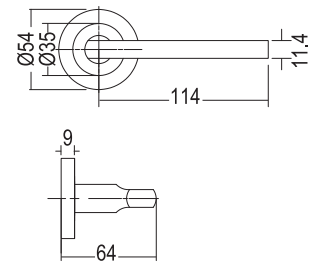
**Lever Handle**

**ALH-6000/MB**



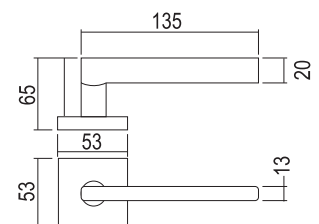
Code	Material	Finishing	Packing
ALH-6000/MB	Stainless Steel SUS304	Matt Black	20 sets/ctn

**ALH-6002/MB**



Code	Material	Finishing	Packing
ALH-6002/MB	Stainless Steel SUS304	Matt Black	20 sets/ctn

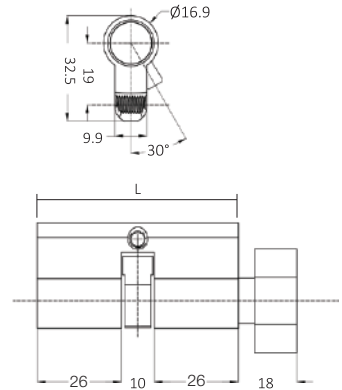
**ALH-6102/MB**



Code	Material	Finishing	Packing
ALH-6102/MB	Stainless Steel SUS304	Matt Black	20 sets/ctn

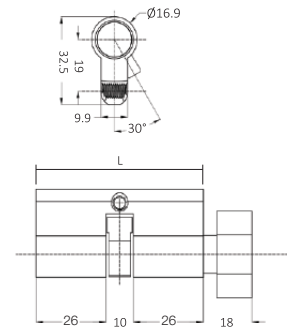
**Profile Cylinder**

**APC-AD/MB Series**



Code	Material	Finishing	Packing
APC-AD60/MB	Solid Brass	Matt Black	60pcs/ctn
APC-AD70/MB	Solid Brass	Matt Black	60pcs/ctn

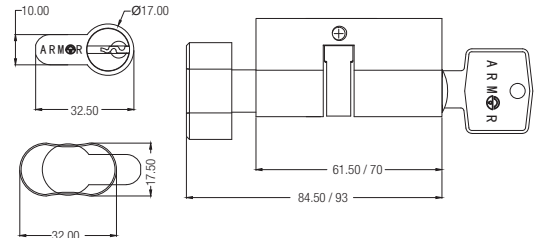
**APC-AS/MB Series**



Code	Material	Finishing	Packing
APC-AS60/MB	Solid Brass	Matt Black	60pcs/ctn
APC-AS70/MB	Solid Brass	Matt Black	60pcs/ctn
APC-AS80/MB	Solid Brass	Matt Black	60pcs/ctn
APC-AS90/MB	Solid Brass	Matt Black	60pcs/ctn

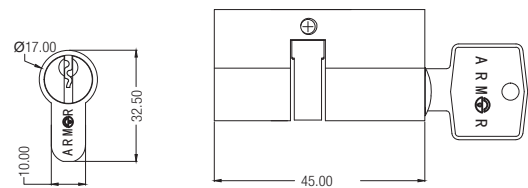
**Profile Cylinder**

**APC-AP/MB Series**



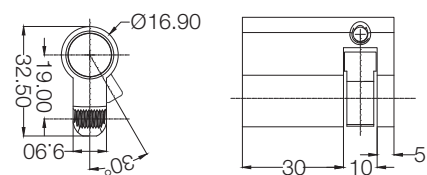
Code	Material	Finishing	Packing
APC-AP60/MB	Solid Brass	Matt Black	60pcs/ctn
APC-AP70/MB	Solid Brass	Matt Black	60pcs/ctn

**APC-AT45/MB**



Code	Material	Finishing	Packing
APC-AT45/MB	Solid Brass	Matt Black	60pcs/ctn

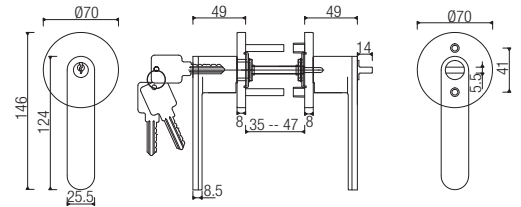
**APC-AK 45/MB**



Code	Material	Finishing	Packing
APC-AK45/MB	Solid Brass	Matt Black	60pcs/ctn

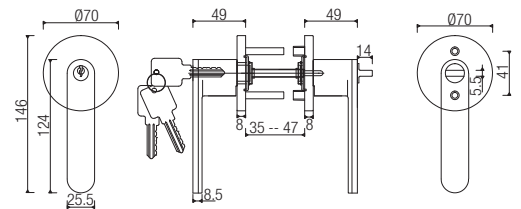
**Tubular Lever**

**ATL-1900/MB/RW/ET**



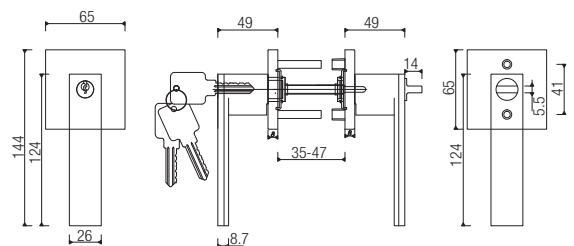
Code	Material	Finishing	Backset	Door thickness	Packing
ATL-1900-MB-RW-ET	Zinc Diecast	Matt Black	60-70	32-45	24 set/ctn

**ATL-1910/MB/RW/PRIVACY**



Code	Material	Finishing	Backset	Door thickness	Packing
ATL-1910/MB/RW/PRIVACY	Zinc Die-cast	Matt Black	60-70	32-45	24 sets/ctn

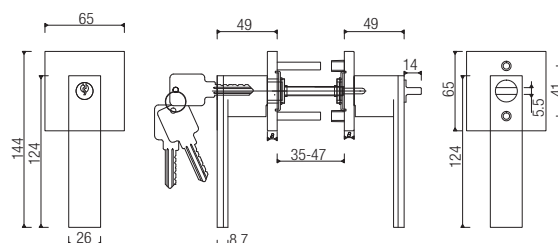
**ATL-2900-MB-WN-ET**



Code	Material	Finishing	Backset	Door thickness	Packing
ATL-2900-MB-WN-ET	Zinc Die-cast	Matt Black	60-70	32-45	24 sets/ctn



### ATL-2910-MB-WN-PR



Code	Material	Finishing	Backset	Door thickness	Packing
ATL-2910-MB-WN-PR	Matt Black	Zinc Die-cast	60-70	32-45	24 set/ctn



### ATL-9814/ORB-ET



Code	Material	Finishing	Backset	Door thickness	Packing
ATL-9814/ORB-ET	MB	Zinc Die-cast	60-70	32-45	24set/ctn
ATL-9814/ORB-Privacy	MB	Zinc Die-cast	60-70	32-45	24set/ctn



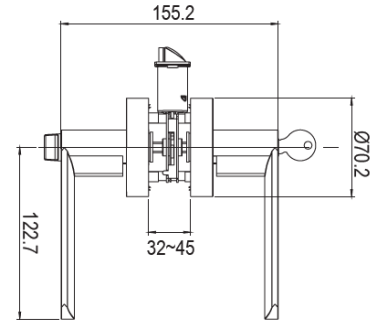
### ATL-R65B09-CS-MB-ET



Code	Material	Finishing	Backset	Door thickness	Packing
ATL-R65B09-CS-MB-ET	MB	Zinc Die-cast	60-70	32-45	24 set/ctn
ATL-R65B09-CS-MB-PR	MB	Zinc Die-cast	60-70	32-45	24 set/ctn

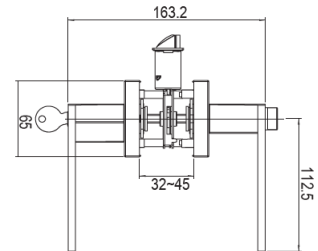
**Tubular Lever**

**ATL-R1506/MB**



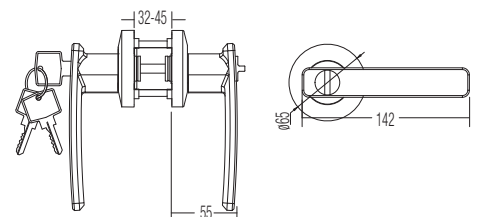
Code	Material	Finishing	Backset	Door thickness	Packing
ATL-R1506/MB/ET	Zinc Die-cast	Matt Black	60-70	32-45	24 sets/ctn
ATL-R1506/MB/Privacy	Zinc Die-cast	Matt Black	60-70	32-45	24 sets/ctn

**ATL-R1607/MB**



Code	Material	Finishing	Backset	Door thickness	Packing
ATL-R1607/MB/ET	Zinc Die-cast	Matt Black	60-70	32-45	20 sets/ctn
ATL-R1607/MB/Privacy	Zinc Die-cast	Matt Black	60-70	32-45	20 sets/ctn

**ATL-6318/CS/MB/ET**

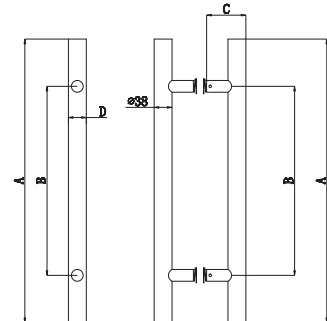


Code	Material	Function	Finishing	Backset	Door thickness	Packing
ATL-6318/CS/MB/ET	Zinc Die-cast	Entrance	Matt Black	60-70	32-45	24 sets/ctn

## Pull Handle



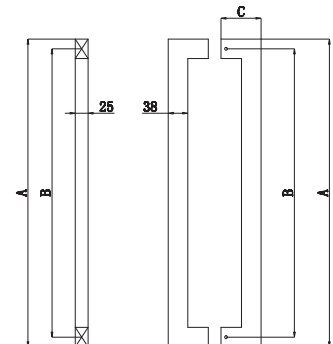
**APH-302/MB**



Code	Material	Finishing	Size A	Size B	Size C	Size D	Packing
APH-302/600/MB	Stainless Steel	Matt Black	600	400	73	Ø38	10pair/ctn
APH-302/900/MB	Stainless Steel	Matt Black	900	600	73	Ø38	10pair/ctn
APH-302/1200/MB	Stainless Steel	Matt Black	1200	900	73	Ø38	10pair/ctn



**APH-500/MB**  
Pull Handle (217)



Code	Material	Finishing	Size A	Size B	Size C	Packing	
APH-500/0600/MB	Stainless Steel	Matt Black	25x38x600	600	562	78	10pair/ctn
APH-500/0900/MB	Stainless Steel	Matt Black	25x38x900	900	862	78	10pair/ctn
APH-500/1200/MB	Stainless Steel	Matt Black	25x38x1200	1200	1162	78	10pair/ctn

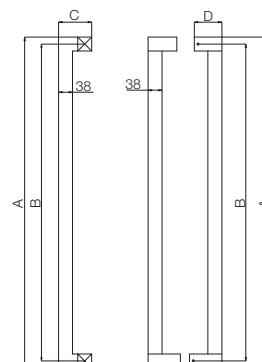


**Pull Handle**



**APH-501/MB**

Pull handle (312 - 38 x38)



Code	Material	Finishing	A	B	C	D	Packing
APH-501/0600/MB	Stainless Steel	Matt Black	600	562	90	78	10pair/ctn
APH-501/0900/MB	Stainless Steel	Matt Black	900	862	90	78	10pair/ctn
APH-501/1200/MB	Stainless Steel	Matt Black	1200	1162	90	78	10pair/ctn
APH-501/1500/MB	Stainless Steel	Matt Black	1500	1462	90	78	5pair/ctn
APH-501/1800/MB	Stainless Steel	Matt Black	1800	1762	90	78	5pair/ctn



**APH-504/1067/MB**



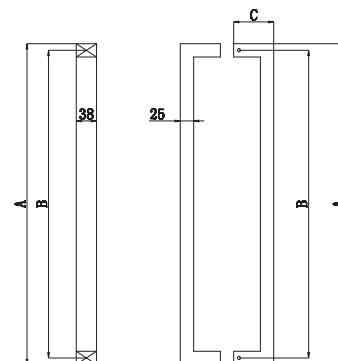
Code	Material	Finishing	Packing
APH-504/1067/MB	Stainless Steel SUS304	Matt Black	4pair/ctn

**Pull Handle**



**APH-503/MB**

Pull handle (218A)

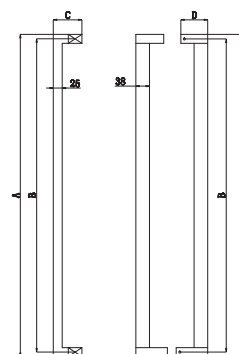


Code	Material	Finishing	A	B	C	Packing
APH-503/600/MB	Stainless Steel	Matt Black				10pair/ctn
APH-503/900/MB	Stainless Steel	Matt Black	900	875	75	10pair/ctn
APH-503/1200/MB	Stainless Steel	Matt Black	1200	1175	75	10pair/ctn



**APH-505/MB**

Pull handle (218B)

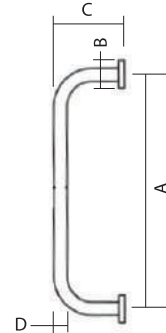


Code	Material	Finishing	A	B	C	D	Packing
APH-505/0900/MB	Stainless Steel SUS304	Matt Black	900	875	80	78	10pair/ctn
APH-505/1200/MB	Stainless Steel SUS304	Matt Black	1200	1175	80	78	4pair/ctn

**Pull Handle**



**APH-200/MB**



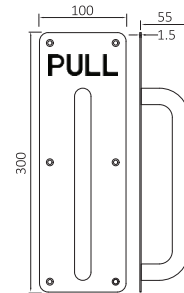
Code	Material	Finishing	A	B	C	D	Packing	RM/Unit
APH-200/150/MB	Stainless Steel SUS304	Matt Black	150	52	63	19	50pcs/ctn	50.00
APH-200/229/MB	Stainless Steel SUS304	Matt Black	229	-	-	-	50pcs/ctn	56.00



**APH-PP500/MB**



Push and pull plate with Handle



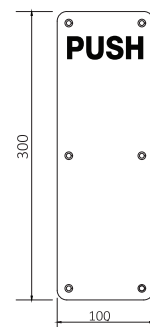
Code	Material	Finishing	Packing
APH-PP500/MB	Stainless Steel SUS304	Matt Black	20pcs/ctn



**APH-PP501/MB**



Push plate



Code	Material	Finishing	Packing
APH-PP501/MB	Stainless Steel SUS304	Matt Black	60pcs/ctn

**Door Closer**

**ADC-900/RA/MB/EN3**



Code	Material	Finishing	Size A	Size B	Packing
ADC-900/RA/MB/EN3	Aluminium	Matt Black			10pcs /ctn

**ADC-900/SA/MB/EN3**



Code	Material	Finishing	Size A	Size B	Packing
ADC-900/SA/MB/EN3	Aluminium	Matt Black			10pcs /ctn

**ADC-905/SA/EN5/MB**



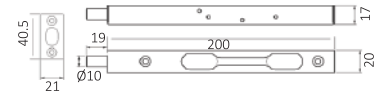
Code	Material	Finishing	Backset	Door thickness	Packing
ADC-905/SA/EN5/MB	Aluminium	MB			10 set/ctn

**Flush Bolt & Door Stopper**

**ADB-21/MB**



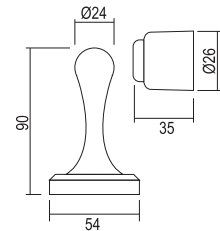
Flush Bolt



Code	Material	Finishing	Packing
ADB-2108/MB	Stainless Steel SUS304	Matt Black	100pcs/ctn
ADB-2112/MB	Stainless Steel SUS304	Matt Black	100pcs/ctn
ADB-2118/MB	Stainless Steel SUS304	Matt Black	50pcs/ctn
ADB-2124/MB	Stainless Steel SUS304	Matt Black	50pcs/ctn

**ADS-812/MB**

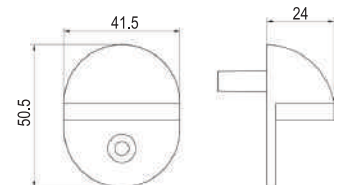
Door Holder



Code	Material	Finishing	Packing
ADS-812/MB	Stainless Steel	Matt Black	160pcs /ctn

**ADS-701B/MB**

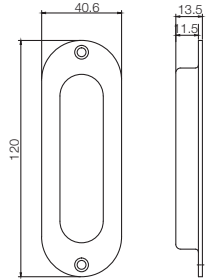
Door Stopper



Code	Material	Finishing	Packing
ADS-701B/MB	Zinc Diecast	Matt Black	100pcs /ctn

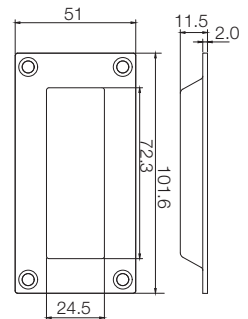
**Flush Pull**

**AFP-600/MB**



Code	Material	Finishing	Packing
AFP-600/MB	Stainless Steel SUS304	Matt Black	60pairs /ctn

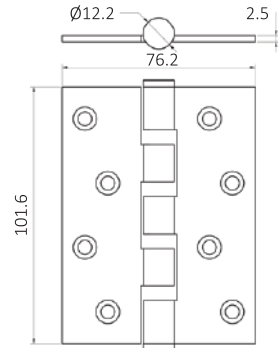
**AFP-42/MB**



Code	Material	Finishing	Packing
AFP-42/MB	Stainless Steel SUS304	Matt Black	200pcs /ctn

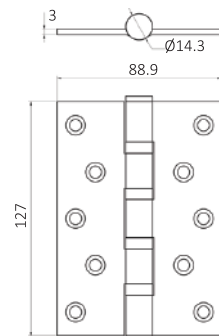
**Hinge**

**ADH-S41/4BB/MB**



Code	Size	Ball Bearing	Material	Finishing	Packing
ADH-S41/4BB/MB	4"x3"x2.5mm	4BB	Stainless Steel SUS304	Matt Black	20 pack/ctn

**ADH-S52/4BB/MB**



Code	Size	Ball Bearing	Material	Finishing	Packing
ADH-S52/4BB/MB	5"x3"x3mm	4BB	Stainless Steel SUS304	Matt Black	20 pack/ctn



**Sliding Barn Door - Roller System**



Code	Function	Finishing	Packing
ASF-BD200/2.0M	2 way self closing	Matt Black	1set/ctn
ASF-BD200/2.5M	2 way self closing	Matt Black	1set/ctn
ASF-BD200/3.0M	2 way self closing	Matt Black	1set/ctn



## Sliding Barn Door - Roller System

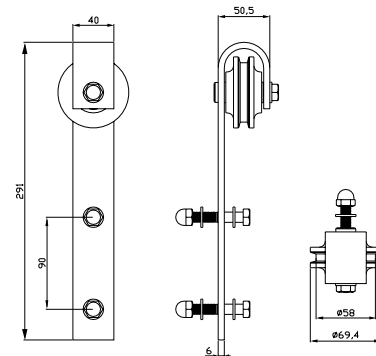
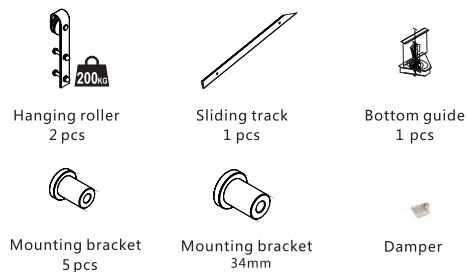
### Features

- Suitable for single or multiple sliding doors
- Suitable for sliding doors for families, hotels, office buildings, etc.
- Balance wheel design principle
- Manual push and pull, positioning on both sides
- Easy installation, smooth operation, long service life
- 2 Direction Self Closing

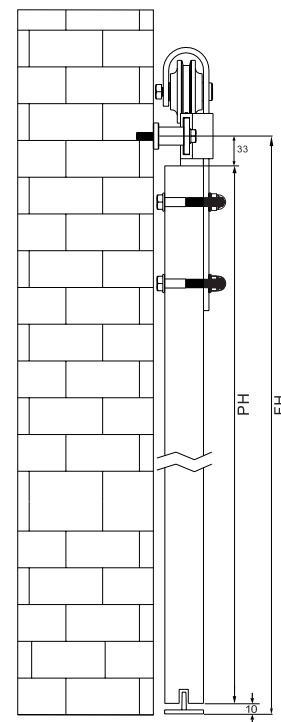
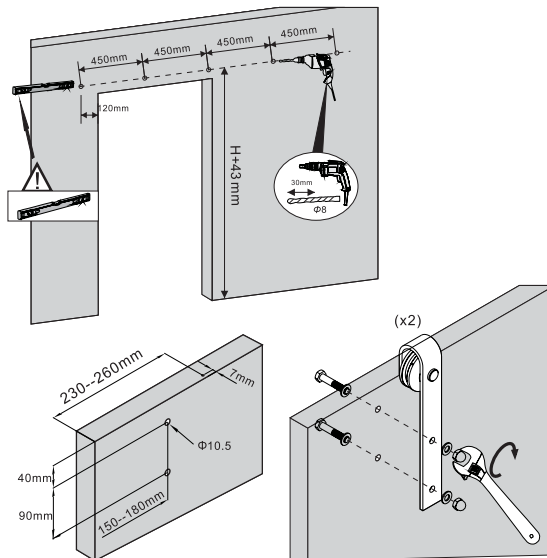
### Material and finishes

- Track: iron, spray sand black
- Hanging roller: Iron, spray and sand black
- Locator: zinc alloy, spray sand black
- Track fixing parts: iron, spray sand black
- Door weight: 120kg
- Door thickness: 35mm - 45mm
- Finishing: Matt Black
- Material: Tro

### Wooden door standard configuration



### Installation dimensions



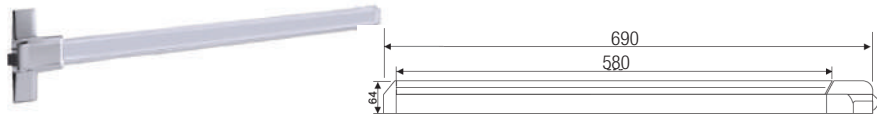
Code	Function	Finishing	Packing
ASF-BD200-1/1.5M	Stopper	Matt Black	1set/ctn
ASF-BD200-1/2.0M	Stopper	Matt Black	1set/ctn
ASF-BD200-1/2.5M	Stopper	Matt Black	1set/ctn
ASF-BD200-1/3.0M	Stopper	Matt Black	1set/ctn
ASF-BD200-1/2.0M	Soft Closing	Matt Black	1set/ctn
ASF-BD200-1/2.5M	Soft Closing	Matt Black	1set/ctn
ASF-BD200-1/3.0M	Soft Closing	Matt Black	1set/ctn

## Panic Exit Bar

### AED-802P



### AED-802S

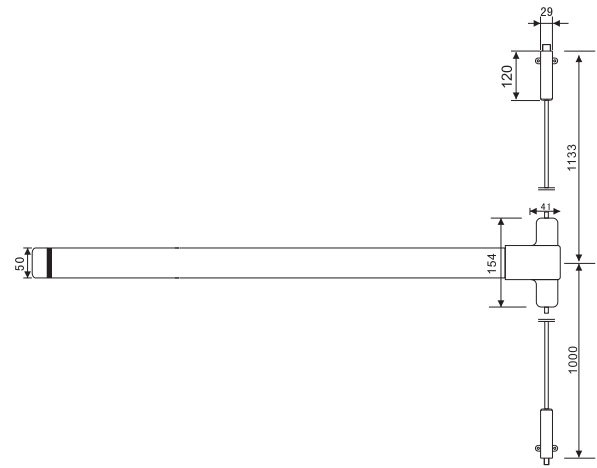


Code	Material	Finishing	Packing
AED-802P	Steel -powder coat	Red & Black	4set/ctn
AED-802S	Stainless Steel SUS304	SS	4set/ctn

### AED-807P



### AED-807S



Code	Material	Finishing	Packing
AED-807P	Steel -powder coat	Red & Black	4set/ctn
AED-807S	Stainless Steel SUS304	SS	4set/ctn

Category of use	Durability	Door Mass	Suitability for use on fire/smoke doors	Safety	Corrosion resistance	Security	Project of horizontal bar	Type of horizontal bar operation	Field of Door application
3	7	6	B	1	4	2	2	B	A

Feature	AED-802P/S	AED-807P/S
Lock point	1	2
Touch bar	Full length of device, 800mm	
Door style	Single and double door	
Max. Door weight	200kg	
Security Anti-thrust latch	●	—
Door Height*	2133mm	
Door thickness*	50mm	
Non-handed Design	●	●
Trim optional AEP-910S	○	○
Approved to EN1125	●	●

1. CE mark, fire rated
2. EN1125 and EN1634 certificated
3. None handed
4. Material: stainless steel or steel painting
5. Difference finish is available

● = Yes ; — = No ; ○ = Option

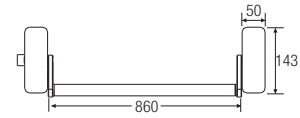
\*Note: if the door width, door height and door thickness is outside of the specification, the order should mark the special requirement.

## Panic Exit Bar

### AED-901P



### AED-901S

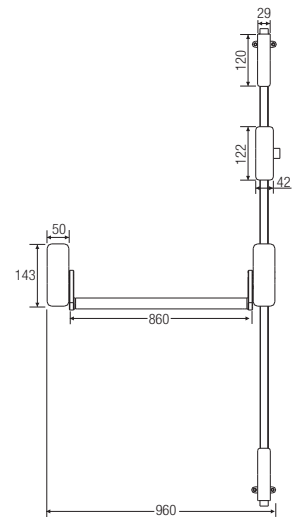


Code	Material	Finishing	Packing
AED-901P	Steel -powder coat	Red & Black	4set/ctn
AED-901S	Stainless Steel SUS304	SS	4set/ctn

### AED-906P



### AED-906S



Code	Material	Finishing	Packing
AED-906P	Steel-powder coat	Red & Black	4set/ctn
AED-906S	Stainless Steel SUS304	SS	4set/ctn

- 1. CE mark, fire rated
- 2. EN1125 and En1634 certificated
- 3. None handed
- 4. Pullman latch and lateral latch design
- 5. CE mark, fire rated
- 6. Modular design, more than 4 point locks are available
- 7. Material: stainless steel or steel painting
- 8. Difference finish is available

Category of use	Durability	Door Mass	Suitability for use on fire/smoke doors	Safety	Corrosion resistance	Security	Project of horizontal bar	Type of horizontal bar operation	Field of Door application
3	7	6	B	1	4	2	2	A	A

Feature	AED-901P/S	AED-906P/S
Lock point	1	2
Touch bar	1000mm Length	
Door style	Single and double door	
Max. Door weight	200kg	
Security Anti-thrust latch	—	—
Door Height*	2133mm (Optional 2432mm)	
Door thickness*	50mm	
Non-handed Design	●	●
Trim optional AEP-910S	○	○
Approved to EN1125	●	●

● = Yes ; — = No ; ○ = Option

\*Note: if the door width, door height and door thickness is outside of the specification, the order should mark the special requirement.